



Darwin Today

Exhibition information and booking



Darwin Today

the evolution revolution

Introduction

*In Darwin Year 2009, the **Darwin Today** exhibition is an opportunity to **engage public** audiences with the contemporary **impact** of Charles Darwin on **their lives**. This high-quality, zero-cost, modular and flexible exhibit describes how Darwin's work continues to affect a wide range of science and non-science areas of modern life.*

Darwin Year celebrates the 200th anniversary of Darwin's birth (12th February 2009) and the 150th anniversary (22nd November 2009) of the first publication of 'On the Origin of Species' - his seminal work describing his theory of evolution by natural selection.

*Charles Darwin's theory changed our understanding of biology forever becoming one of the foundations on which modern biology is built. His work challenged many of the scientific, religious and social **assumptions** of his day - stirring up controversy that continues to the present day. However, his insights were so far-reaching and well-founded that much of our understanding of the modern world (not just in biology) is influenced by Darwinian thinking. 150 years on, Darwin continues, largely unseen and unremarked, to affect many aspects of our lives.*

The exhibition

The Research Councils UK (RCUK) Darwin Today exhibition will:

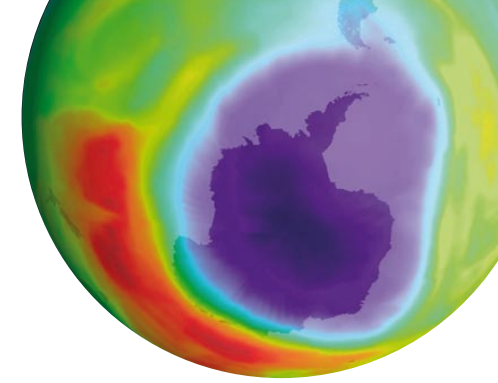
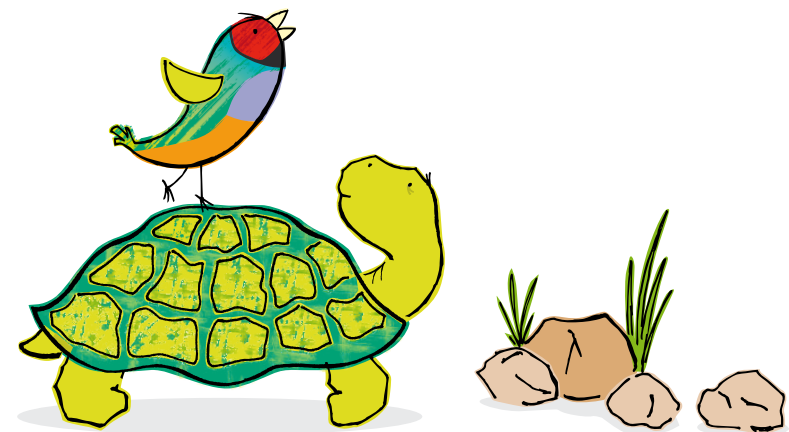
- *introduce the place that Darwin's theory has in current research and its continuing relevance to our lives, and*
- *encourage UK-wide and year-long coverage, especially in smaller, more remote and unusual exhibition spaces.*

The exhibit will be available from late-January to the end of December 2009.

It will directly target a general public audience. Additional materials will be available that may be used, standalone or in conjunction with the exhibition, with both school students and adult groups. RCUK is interested in promoting discussion and debate events around the exhibit. Working with venues, RCUK will encourage local scientists and researchers to take part in supporting events.

The exhibit consists of 5 modules or 'pods', which are designed to 'mix and match' to suit different audiences and exhibition spaces:

- *one pod will be a standalone introduction,*
- *4 pods will describe the impact of Darwinian thinking on different areas of modern research and hence everyday life.*



The exhibit will use high impact graphics, interactive games and accessible text, with 'layered' delivery of content, to engage public, non-specialist audiences. Each curved pod will have a footprint of approximately 3m x 1.5m and stand 2m tall. Each will consist of a large graphic panel, up to 3 freestanding 'lecterns' with text. Other elements may include freestanding interactive cartoon characters and animated interactive game modules and information points.

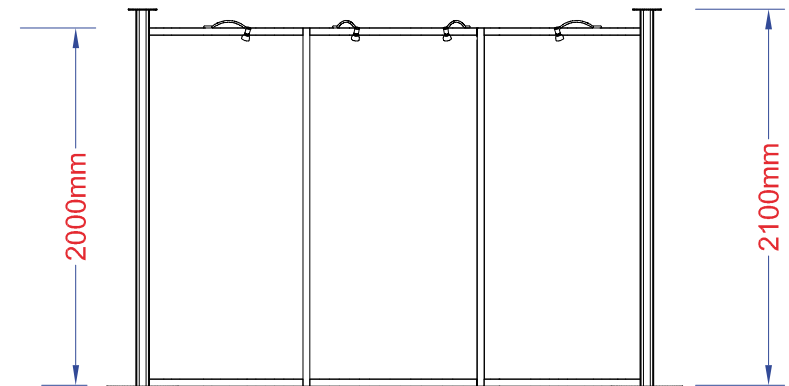
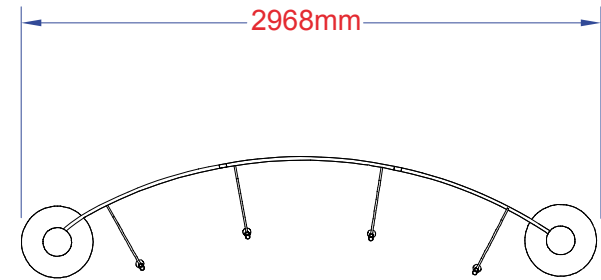
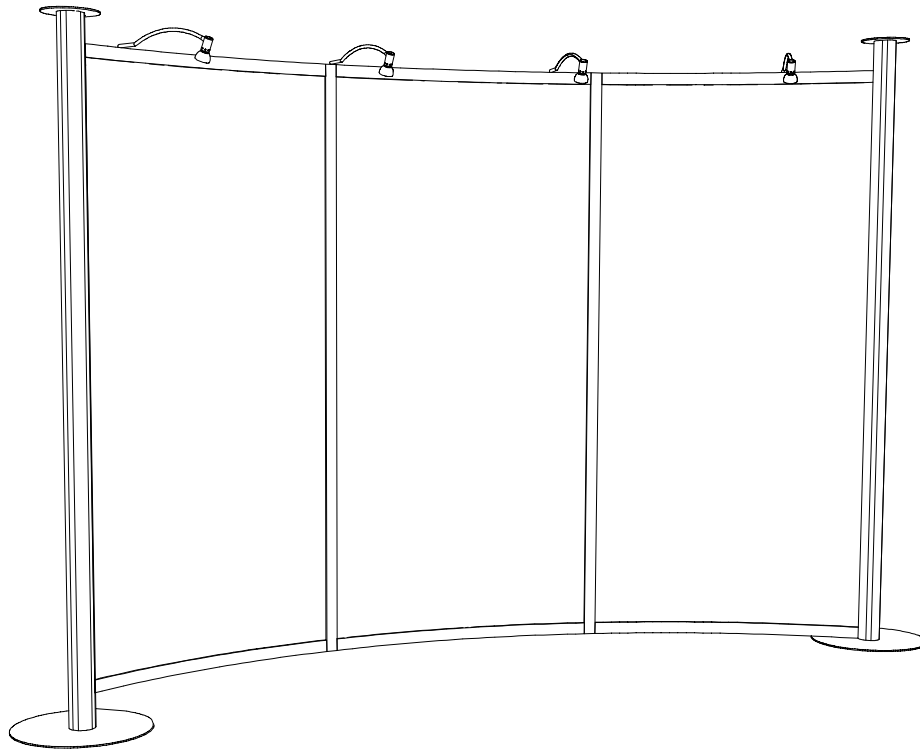
Based on our modern understanding of evolution the exhibit will explore:

- our place in the universe (The origins of humans, What might evolution produce on other planets? what evolution can tell us about social structures?)
- the impact of Darwinian thinking on everyday life (domestication of animals and garden and crop plants. 'Evolution' of diseases. Novel drug development).
- Darwin and political, economic, social and religious thinking,
- issues around diversity, conservation and climate change (Do extinctions matter? Will we cope with climate change? Do we know how much diversity we should conserve?)



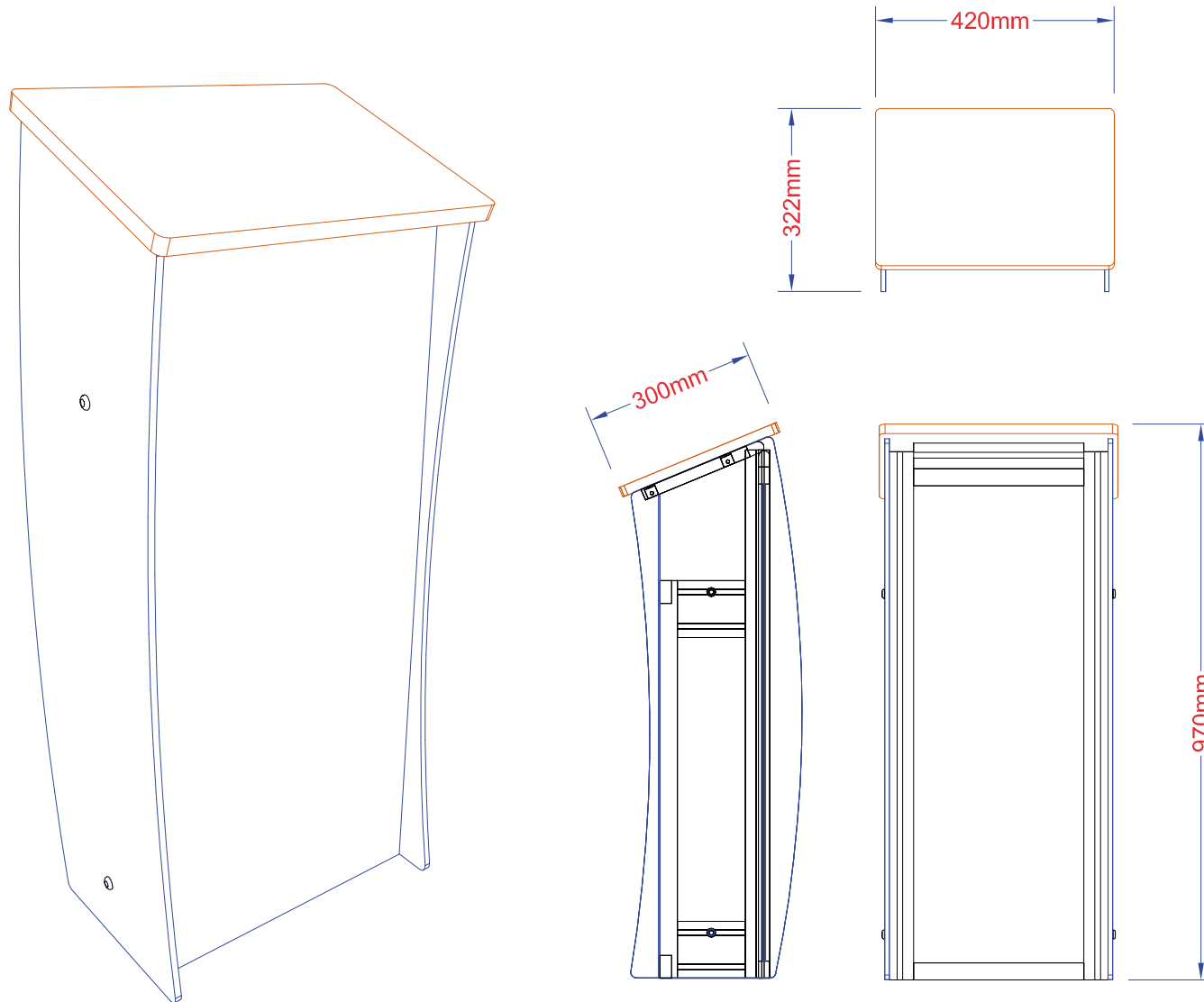
Graphics shown for illustrative purposes only and subject to change.

Module / 'pod'



Each module or 'pod', which will be supplied with lighting systems which will require a suitable power source.

Lecturns



Each module or 'pod' may have up to 3 lecturns to be positioned around it.

Darwin Today



For further information and to book the exhibition contact: darwin.today@bbsrc.ac.uk or call **Patrick Middleton, 01793 413 368**