



COPROLITE

Coprolite is the newsletter of the Geological Curator Group, compiled and produced by Cinzia Ragni (Newsletter editor). Contributions are welcome and should be sent to coprolite@geocurator.org by the appropriate deadline.

Spring edition issued in March - Deadline 15th February. Summer edition issued in June - Deadline 15th May. Autumn edition issued in September - Deadline 15th August. Winter edition issued in December - Deadline 15th November.

No. 107
Winter
2023

Chair: Emma Nicholls (Oxford University Museum of Natural History) chair@geocurator.org

Secretary: Lu Allington-Jones (Natural History Museum, London) secretary@geocurator.org

Membership: Cindy Howells (National Museum Cardiff) membership@geocurator.org

Please log into our website and check that your contact details and preferences are correct and check whether you need to pay your subs (due January 1st).



@OriginalGCG



<https://www.facebook.com/GeologicalCuratorsGroup>



www.geocurator.org

Events

50th Anniversary Meeting: Geological Collections Past, Present and Future. 17-18th May 2024

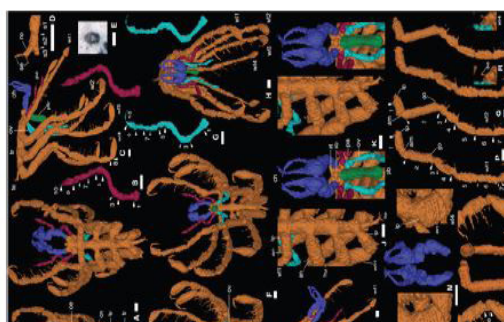
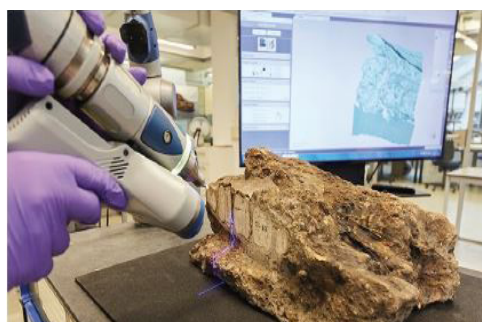
Day 1: Presentations on the theme of past, present and future of geological collections. To be held at the University of Leicester. Reception at Leicester Museum & Art Gallery, followed by an evening meal.

Day 2: Presentations and tours at British Geological Survey Nottingham and Charnwood Forest Geopark

Please send abstracts of up to 250 words to events@geocurator.org and state whether it is for poster or platform presentation. Abstract deadline is 1st March 2024.



British
Geological
Survey

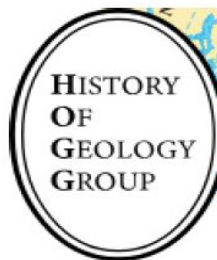




The History of Geological Discovery in Polar Regions

16-17th July 2024

A joint meeting of the History of Geology Group and the Geological Curators Group.



16th July will be a day of presentations at the British Antarctic Survey (BAS), High Cross, Madingley Road, Cambridge. 17th July will consist of visits to the archival and geological displays at the Sedgwick Museum and Scott Polar Research Institute (SPRI), Cambridge.

Registration will be open in early 2024 and full details will be circulated then.

Please contact Cindy Howells: membership@geocurator.org in order to express an interest in attending or offer a relevant talk.

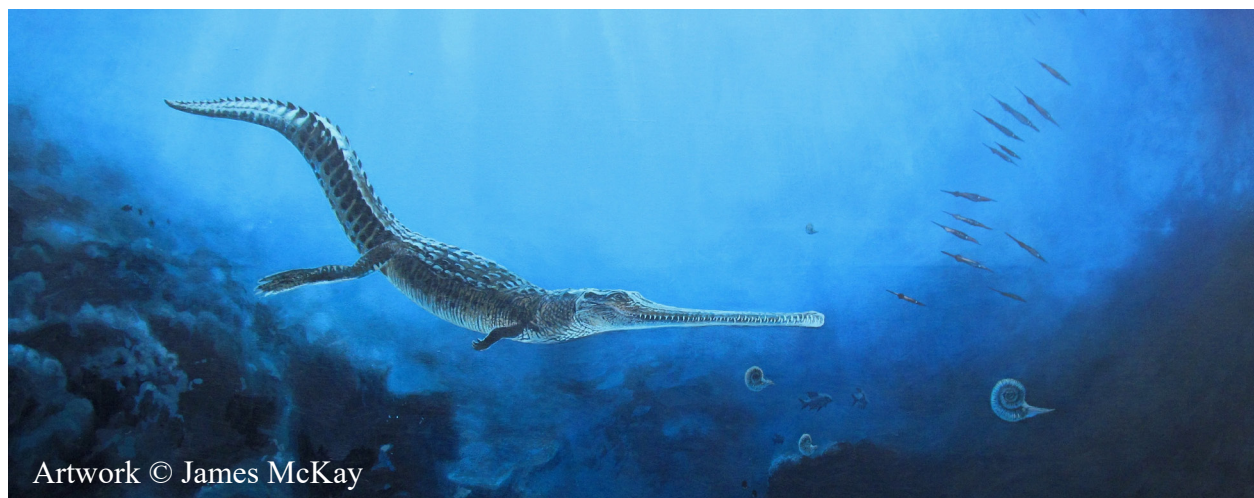


Symposium on Toarcian Palaeobiology

17th – 20th June 2024



We are pleased to announce the forthcoming conference dedicated to all aspects of Toarcian palaeobiology, at the Bath Royal Literary and Scientific Institution (UK). The symposium on Toarcian Palaeobiology is an opportunity to platform the diversity of global Toarcian palaeontological research by spotlighting underrepresented fields such as the marine Benthos, the terrestrial realm, and the ecological impacts of the Toarcian Oceanic Anoxic Event, alongside popular fields including ammonites and marine reptiles. We have a range of keynote speakers covering topics including exceptional preservation of Strawberry Bank material, crocodylomorphs, insects, and foraminifera extinction. More information here <https://www.geocurator.org/events/168-symposium-on-toarcian-palaeobiology>



Artwork © James McKay



Good News

During the SMMP meeting hosted by the Munich show in October 27th, 2023, we heard a lot of good news!

- Melanie Kaliwoda reported the opening of the Moon Impact exhibit at the Museum of the University of Munich (Museum Reich der Kristalle) (<https://expo-moonimpact.eu/>)
- Cristiano Ferraris informed that the Torino Mineral Museum will reopen soon, and will present mineral samples from Northern Italy.
- Eloïse Gaillou reported that there is a temporary exhibit “Collectible minerals” at the Paris School of Mines, from March 9th, 2024 (<https://www.musee.minesparis.psl.eu/Events/TempExhibits/TempExhibits2023/collectible-minerals/>)
- Paola Giura reported that there is a temporary exhibit “InfraTerre” at the Sorbonne Mineral Collection until the end of January 2024 (<https://sciences.sorbonne-universite.fr/evenements/infra-terre-incursion-chromatique>)
- Simone Padova mentioned the existence of the largest university museum in Europe: the Museum of Nature and Mankind, in Padua, Italy (<https://visitmnu.it/en/>)
- Federico Pezzotta reported that Bergamo and Brescia were chosen as Italian Capitals of Culture for 2023, and for this event at the Bergamo museum (from 14th to 29th October 2023) there was a special exhibit of Minerals from the two provinces (<https://www.museoscienzebergamo.it/>)

Thanks to Eloïse Gaillou, Ph.D. (Conservatrice / Curatrix, Musée de Minéralogie Mines Paris - PSL) and to Lu Allington-Jones (Natural History Museum, London) for collectiong this information!

SMMP

26 - 29 October
2023

**MUNICH
SHOW**

Mineralientage
München

The leading
trade show for
minerals, fossils,
gemstones &
jewellery



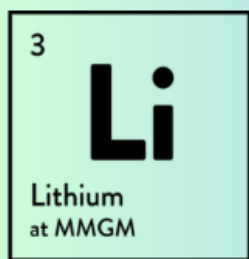
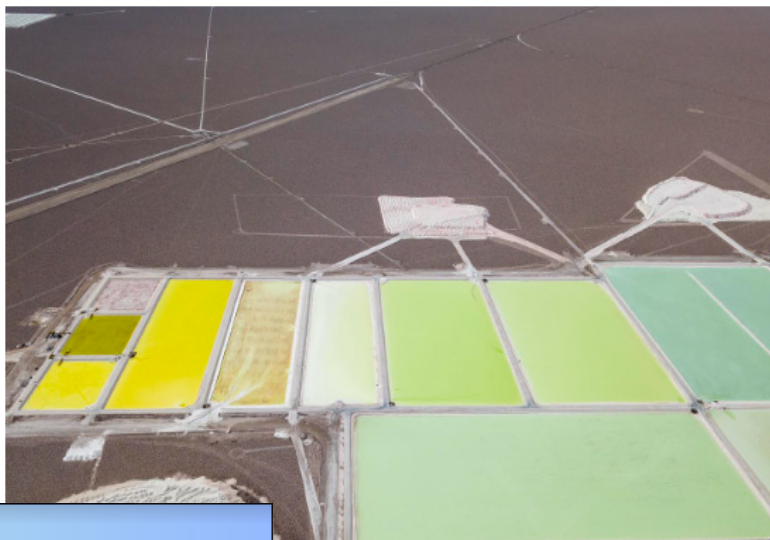


Batteries and Beyond: Why Lithium Matters

If you are planning a trip to Maine, this new exhibition is not to be missed.

On 4th November, the Maine Mineral & Gem Museum (99 Main Street Bethel, Maine 04217) unveiled a new exhibition entitled *"Batteries and Beyond: Why Lithium Matters"*. The focus of this exhibition (which will run for almost 3 years) is lithium. According to their website: "Lithium is playing an important role in advancing the global clean energy economy and is at the centre of conversations in Maine and around the world". Highlights of the exhibition include an overview of the element lithium, the types of resources used to extract it, the complicated global supply chain that has developed to produce lithium-ion batteries, the way these batteries are recycled, and much more.

It might be interesting to visit this exhibition, especially after the (re)discovery of a deposit in the town of Newry (discussed in this article Simmons, W. B., Falster, A. U., & Freeman, G. (2020). The Plumbago North pegmatite, Maine, USA: a new potential lithium resource. *Mineralium Deposita*, 55(7), 1505-1510.).



BATTERIES & BEYOND: WHY LITHIUM MATTERS

OPENING RECEPTION

SATURDAY, NOVEMBER 4, 2023 5-7 P.M.

DISCOVERY GALLERY 99 MAIN STREET BETHEL

ENJOY HOSTED WINE AND HORS D'OEUVRES

RSVP BY 10.21 to dcurtis@mainemineralmuseum.org



Lithium is an important current issue in Maine, the US and beyond, but following this study scientists are calling for a change in the state's current mining laws.

Link: <https://mainemineralmuseum.org/discover/special-exhibits/>

Many thanks to Myles Felch for this important report.



Memories

We are very sorry to report the very recent death of **Brian Page** (1932-2023). Brian was an honorary member of GCG. He was one of our founder members and the first editor of our *Geological Curator* (or as it was originally titled - Newsletter of the Geological Curators' Group) a post he held for the five years, initially creating the successful format it held for many years. All issues of the Geological Curator can be read or downloaded from our website at [Browse Previous Issues - The Geological Curators Group](https://www.geocurator.org/Browse-Previous-Issues-The-Geological-Curators-Group) (geocurator.org)

As a university technician at the University of Keele, Brian was not in the easiest position to have undertaken the arduous role of Editor and eventually pressures from the department became too great to continue, forcing him to resign, both as Editor, and from the university.

The GCG would like to commemorate this in his words, written in the first issue of the journal.

EDITORIAL

This first issue of the Newsletter is inevitably limited in the number of its contributors. The Newsletter should be the mouthpiece of the Group and it must have something to say; it should be more than just a series of interesting articles. It must be a source of information; a disseminator of ideas and techniques; a vehicle for discussion and argument. It will achieve these purposes in direct proportion to your contributions, Members of the Group.

Please contribute to our future issues. We need articles of interest and scholarship. In particular we need to publish your appeals for information and material and the responses to these appeals.

This publication is for your use. I cannot urge you too strongly to "Use It".

Editor

Brian Page.

Simon Kelly passed away in May having been a member of GCG since at least 2003. Before retirement he had previously worked at the Cambridge Arctic Shelf Programme for many years. Initially a research palaeontologist and curator of the rock collections, he then switched to the British Antarctic Survey as a palaeontologist, before returning to CASP in much the same capacity as before, where he contributed to nearly 100 scientific reports and 60 journal articles and book sections. He will be remembered for his significant contributions to Mesozoic biostratigraphy, especially of East Greenland, as well as to the taxonomy and nomenclature of Jurassic and Cretaceous bivalves. Simon was awarded a Polar Medal in 2000, and a prestigious second clasp to his medal in the 2023 New Year Honours list. A full obituary can be found here: <https://www.sciencedirect.com/science/article/pii/S0016787823000755?via%3Dihub>



Cindy Howells, GCG Membership Secretary and Cinzia Ragni Newsletter Editor

Coprolite of the Quarter

Guess the Coprolite

As no one managed to correctly GUESS THE COPROLITE from the last issue, we are giving you another chance!

To help you, we can say this coprolite came from an important Lagerstätten present both in Italy and Switzerland.

Good luck!

© Museo cantonale di storia naturale Lugano (Swiss)



Subscription



Subscriptions for 2024 are due on 1st January. You should have already received an email giving details of our new bank account in case you'd like to set up an annual Standing Order. Otherwise you can pay through our website as normal, or by a BACS transfer (please ask me for the new bank details if you can't see them on our website). Please contact me if you have any queries about subscription payments.

Cindy Howells (membership@geocurator.org)

Merry Christmas and Happy New Year!!!

<https://www.geocurator.org/coprolite>